

2nd FAI European Indoor Skydiving Championships
&
4th FAI World Cup of Indoor Skydiving 2022

REVISED BID FROM
AIRSPACE INDOOR SKYDIVING



1.	Event Organisers	4
1.1	FAI Member/NAC	4
1.2	National Parachute Federation	4
1.3	ISC Delegate	4
1.4	Organising Committee	4
1.5	Application fee	5
1.6	Commercial rights	5
2	Event Details	5
2.1	Full name of Event	5
2.2	Letters of approval	5
2.3	Disciplines to be contested.	5
2.4	Event Dates	6
2.5	Location of Event	7
2.6	Access to location	7
2.7	Weather conditions – Not applicable	8
2.8	Airspace restrictions – Not applicable	8
2.9	Landowner restrictions	8
2.10	Details of event insurance	9
2.11	Details of insurance	9
2.12	Budget and Pricing	9
2.13	Facilities	11
2.14	Wind tunnel	13
2.16	Accommodation	15
2.18	Outline of media plan	16
2.19	Accommodation details for FAI/ISC officials.	17
2.20	Details of all Judging and Scoring Equipment to be provided.	17

2.21	Public Address system	17
2.22	Safety	17
2.23	Proposals for Event Officials	18
2.24	Details of on-site communications	18
2.25	National, State, Provincial, Local, Organiser Legislation / Rules	18
2.26	Visa requirements	18
2.27	Medals	18
2.28	Anti-Doping Requirements	18
2.30	Date of post event report	18
2.31	Additional Information	18
	Opening and Closing Ceremonies	18

1. Event Organisers

Airspace Indoor Skydiving SA & Flyevents.org
Rue Charles Lindbergh 26
6041 Gosselies
Belgium
Contact person: Håvard Flaatt
Contact number: +32 485 70 23 72
E-mail: havard@airspace.be

1.1 FAI Member/NAC

Name: Royal Belgian Aero Club
Address: Montoyerstraat 1
Zip: 1000
City: Brussels
Country: Belgium
Contact Person: Patrick Pauwels
Telephone: +32(2)511 79 47
E-mail: secretariat@belgianaeroclub.be

1.2 National Parachute Federation

Name: Belgian Parachute Federation
Address: Boomgaardstraat 22 bus 17
Zip: 2600
City: Berchem
Country: Belgium
Contact Person: Mark Blockhuys
Telephone: +32 476 434867
E-mail: mark.blockhuys@gmail.com

1.3 ISC Delegate

Name: David Grauwels
E-mail: davegrauwels@gmail.com
Telephone: +32 485 740320

1.4 Organising Committee

CEO Airspace Indoor Skydiving - Eddy Vande Vonder
eddy@airspace.be

Head of Organising Committee - Håvard Flaatt
havard@airspace.be

Meet Director - Michele Cnops
mich@airspace.be

Registration and communication - Sophie Carton
sophie@airspace.be

PR and Media, Opening and Closing Ceremony coordinator - Aurélie Schietecatte
aurelie@airspace.be

1.5 Application fee

We are awaiting instructions from the ISC. Previous FAI Deposit and Application Fee for the 2020 competition have been reimbursed following the rescheduling of the 2020 event.

Banking Information:

- a) Account Name: Airspace SA
- b) Account Number: BE 78 7340 3585 8986
- c) IBAN: BE 78 7340 3585 8986
- d) BIC: KREDBEBB
- e) Bank name: KBC Heverlee

1.6 Commercial rights

As per FAI rulings

2 Event Details

2.1 Full name of Event

2nd FAI European Indoor Skydiving Championships and 4th FAI World Cup of Indoor Skydiving 2022

2.2 Letters of approval

Annex B1 - CCI Hanuit
Annex B2 - Chareloi Airport (BSCA)
Annex B3 - Echevin Eco & commerce Ville Charlero (Council of sports and economic affairs)
Annex C1 - Maison du tourisme (Ministry of Tourism / Interior)

(These letters date back to the original bid from 2018, we are in the process of renewing them).

2.3 Disciplines to be contested.

Formation Skydiving Event

- 4-way FS (Open, Female, Junior)
- 4-way VFS

Artistic Events

- Dynamic 4-way (Open, Junior)
- Dynamic 2-way (Open, Junior)
- Solo Freestyle (Open, Junior)

2.4 Event Dates

Airspace Indoor Skydiving suggests to hold the event from April 5-10, 2022. Large and successful international events have perviously been organised by Airspace Indoor Skydiving during this period. We know from experience that these dates work well and it is at the end of the Northern hemisphere Indoor Skydiving training season.

Complete program / Competition dates and schedule:

Date	Description
March 21 - April 3, 2022	Registered training period*
April 2-5, 2022	Judges Training Course, arrival of Chief Judge of Training
April 3, 2022 (Sunday)	Arrival of Chief Judges, Freestyle Judging Workshop
April 4, 2022 (Monday)	Arrival of Event Judges Pre competition training day 1**
April 5, 2022 (Tuesday)	Official Arrival day Arrival of Judges Arrival of Officials / Delegations Arrival of Teams Registration Team Photos Pre competition training day 2**
April 6, 2022 (Wednesday)	Official Practice day (Speed setting Flights) Registration Opening Ceremony and Competition Draws Judges Conference Competitors and Team Leaders Meetings Team Photos
April 7, 2022 (Thursday)	Competition Day 1 (Start approximately 07h)
April 8, 2022 (Saturday)	Competition Day 2 (Start approximately 07h)
April 9, 2022 (Saturday)	Competition Day 3 (Start approximately 07h) Closing Ceremony & Awards (Start approximately 20h) Gala Dinner & Party (Start approximately 20h)
April 10, 2022 (Sunday)	Official Departure Day Departure of Delegations

* A max amount of training time allowed per team in the days leading up to the competition might be set to give all teams a chance to book training time.

** Each Team in each category, whose official registration reaches the Organiser of the competition before its official deadline, will have the opportunity, under the terms and conditions set by the Organiser, to book a maximum of fifteen (15) minutes training Flights between 8:00 am and 24:00 pm (local time of the competition) to be performed within forty-eight (48) hours prior to Official Speed Setting Flights.

Note: Should the event turn out to be significantly smaller than what was predicted for Airspace2020 (400 registered athletes), we wish to reserve the right to cut one competition day.

2.5 Location of Event

Airspace Indoor Skydiving is located in Charleroi, Belgium, by the Brussels South International Airport only 58 kilometres from the city centre. Located in the centre of Europe, Airspace Indoor Skydiving is close to several large population areas and easy accessible by public transportation, by car and by air. (See Annex D for illustration of map with venue in relation to major European cities as well as Belgian cities)

Address:

Airspace Indoor Skydiving,
Rue Charles Lindbergh 26,
6041 Charleroi,
Belgium

2.6 Access to location

Below you will find information on how to access our facility. For this event we highly recommend you get a **rental car**. We believe this is the best option for you to have the freedom you need during the event. A rental car will allow you to move more easily between your accommodation and the wind tunnel as well as give you lots of options for activities before, during and after the competition.

By Air

i) Brussel South Charleroi Airport (CRL), International Airport, is located just South-East of the tunnel. Only a 5 min drive from Airspace Indoor Skydiving.

Getting to Airspace Indoor Skydiving from Brussels South Charleroi Airport (CRL)

- Car Rental, the main car rental companies have offices at the airport:
<https://www.brussels-charleroi-airport.com/en/parking-access>
- Taxi, with several different companies operating to and from the Airport.
<https://www.brussels-charleroi-airport.com/en/parking-access>
- Walk (estimated 17 min from door to door)
- On demand shuttles to be booked directly with your hotel (fees may vary).

ii) The main International Airport in Belgium, Brussels Airport (BRU), is located 55 km from Airspace Indoor Skydiving.

Getting to Airspace Indoor Skydiving from Brussels Airport (BRU)

- Car Rental. In the arrivals hall you will find the desks of the major car rental companies.
<https://www.brusselsairport.be/en/passengers/prepare-your-travel/arriving-passenger>
- Taxi, with several different companies operating to and from the Airport.
<https://www.brusselsairport.be/en/passengers/prepare-your-travel/arriving-passenger>
- Bus and Train are alternatives that can take you from Brussels Airport to Airspace Indoor Skydiving. The bus station is located on level 0 - one floor down from the arrivals hall - and can be easily reached by using the escalators or elevators. The airport train station is located below the terminal (basement level -1).
<https://www.brusselsairport.be/en/passengers/prepare-your-travel/arriving-passenger>
- On demand shuttle to be booked directly with your hotel (fees may vary).

By Train / Public Transport

For competitors and spectators traveling from neighbouring countries, arriving with train is a good option. Direct trains to Brussels-Midi depart from Paris, Amsterdam, London and Luxembourg among other near by large population areas.

<https://www.raileurope.com>

From Brussels-Midi there are both bus and train connections to Charleroi.

<http://www.belgianrail.be>

There are also shuttles from Brussels-Midi to Brussels South Charleroi Airport every half hour between 03.00 - 22:30

<https://www.brussels-city-shuttle.com/en/timetable#/bru-crl2>

By Road

Airspace Indoor Skydiving is located just off E 19 and E 42, that are highways connected to the international E-road network. The table below provides some examples of the distance and time it takes to get to Airspace Indoor Skydiving by car from some of the nearby large population areas.

To Airspace Indoor Skydiving from:	Distance	Average Drive Time (by car)	Route
Amsterdam, NL	261 km	2 h 45 m	via E19
Paris, FR	289 km	2 h 59 m	via A2 E19
London, GB	403 km	4 h 49 m	via E42
Frankfurt, DE	393 km	3 h 59 m	via E42 A3
Düsseldorf, DE	222 km	2 h 14 m	via E42

2.7 Weather conditions – Not applicable

2.8 Airspace restrictions – Not applicable

2.9 Landowner restrictions

Airspace Indoor Skydiving owns the land where the tunnel is located, hence no restrictions apply.

2.10 Details of event insurance

Airspace Indoor Skydiving has comprehensive liability insurance. Airspace Indoor Skydiving agrees to obtain insurance acceptable to FAI/ISC, in respect to the sporting event when awarded the Bid. The FAI, its respective directors, employees and assigned event personnel will be added as requested to the policy as additional insured parties during the event.

2.11 Details of insurance

Airspace Indoor Skydiving does not require tunnel flyers to hold third party liability insurance. During the registration process all flyers are asked to sign a Waiver and Risk Acceptance Statement. Each participant will be responsible for getting their own travel medical insurance.

2.12 Budget and Pricing

The budget and pricing for this event has been created using the current ISC rules in regard to the number of rounds, judging panels and other resources each discipline requires. The original budget was created in 2017 for the Belgian bid that was awarded in January 2018. It has since been modified as a result of changes in ISC rules, inflation and increased costs related to the ongoing pandemic.

Competitors entry fee include:

- Opening Ceremony
- Competition cost (including potential re-flights)
- Lunch, snacks and refreshments on competition days
- Closing Ceremony & Banquet including food and drink
- Entry gift-pack
- Discounted Pre-event Flight Time

Non-Competitors entry fee include:

(anyone that is member of the Official delegation e.g Heads of delegation, Team Leaders, Coaches, Judges in training and accompanying persons)

- Opening Ceremony
- Lunch, snacks and refreshments every day during competition
- Closing Ceremony and banquet including food and drink
- Entry gift-pack

	Entry Fee (excluding FAI/IPC Sanction Fee)	Sanction Fee	Pre-event training**
4-Way FS	750€	+ 4 x FAI/IPC Sanction Fee	518,90€/h Off Peak 550 VAT incl.
4-Way VFS	750€	+ 4 x FAI/IPC Sanction Fee	518,90€/h Off Peak 550 VAT incl.
D4W	750€	+ 4 x FAI/IPC Sanction Fee	518,90€/h Off Peak 550 VAT incl.
D2W	500€	+ 2 x FAI/IPC Sanction Fee	518,90€/h Off Peak 550 VAT incl.
Freestyle	400€	+ 1 x FAI/IPC Sanction Fee	518,90€/h Off Peak 550 VAT incl.
Additional team member	300€	+ FAI/IPC Sanction Fee	518,90€/h Off Peak 550 VAT incl.
Additional Event*	€60 discount		-
Non competitors			
Head of delegation	180€	+ FAI/IPC Sanction Fee	-
Member of delegation	180€	+ FAI/IPC Sanction Fee	-
Judge in training	180€	+ FAI/IPC Sanction Fee	-
Accompanying person	180€		-

* If a competitor registers for more than one event the team fee will be discounted by 60€ per each already registered competitor for the additional event.

** Teams that are registered and have paid full Entry Fee can book time at Airspace Indoor Skydiving prior to the event at a reduced rate. All team members have to be present and flying. During the registered training period, flying time will be reserved for teams to train. Flight time could be limited per team to give every team a chance to fly during these dates. The limit will be set when the number of teams is confirmed. The rate of 518,90€ (550 VAT incl.) is for Off Peak hours only (Mon-Sun 09-23). For Peak hours the rate will be 566€ (600 VAT incl.) per hour.

*** Each Team in each category, whose official registration reaches the Organiser of the competition before its official deadline, will have the opportunity, under the terms and conditions set by the Organiser, to book a maximum of fifteen (15) minutes Training Flights between 8:00 am and 24:00 pm (local time of the competition) to be performed within forty-eight (48) hours prior to Official Speed Setting Flights.

Late registration may be accepted if capacity allows. The Entry Fee will be increased by 20% and the FAI/IPC Sanction Fee added to that.

2.13 Facilities

See below illustration as well as Annex E for blueprints

The facility is enclosed in one building and designer-built for hosting large events.

Ground Floor:

When entering the building you meet a large open space of 170 m², specifically designed to draw your attention straight to the flight chamber. The open plan allows an easy flow between reception, bar and flight chamber. For more detailed information see Appendix E.

First Floor

The first floor is specifically designed for spectators, with an open plan area of 120 m² and a glass balustrade to allow for an excellent view of the tunnel. On the first floor there is also a large conference room, a large office, toilets, several smaller office spaces and a staff room.

Judges / Judging Area:

The area around the tunnel is sufficient for both live judges and audience. The facilities can also dedicate two private rooms for the judging panels.

Competitors:

The building has two large changing rooms equipped with a total of 60 permanent lockers and 2 showers. The facilities can dedicate an exclusive large area (lounge) for the competitors alone.

In addition, a temporary extension to the building will be set up as the competitors private facility adequate for gear storage, preparation and creeping. Screens will be set up so that the competitors can easily follow the event.

Food Services:

We are planning to have four food trucks to serve food throughout the day. Athletes and staff will be able to exchange their meal tickets for food during the competition days. The food trucks will also be open to the general public.

Parking:

The road in front of the facility will be closed for traffic and used as the main parking area during the event.

Showers and Toilets:

In addition to the facilities in the building a shower and toilet container will be installed outside.

Drinking Water Outlets:

There is a sufficient amount of drinking water outlets inside - and outside of the building for a large number of people.

See our facilities on Google View:

<https://www.google.com/maps/@50.47231,4.474271,3a,61.7y,13.54h,76.85t/data=!3m7!1e1!3m5!1sbbBr5mAk5GYAAQphVrx1A!2e0!3e2!7i13312!8i6656?hl=en-US>

2. 90 m

Hand-drawn site plan of a skydiving center. The plan shows a large central 'AIRSPACE INDOOR SKYDIVING' area with a 'BAT. PRINCIPAL' and a 'TERRASSE'. To the left is a 'PARKINGS' area with a 'ROUTE PRIVEE' and a 'FOOD TRUCK'. To the right is an 'ESPACE ATHLETES' and a 'W.C. H + F'. At the bottom is an 'ESPACE DETENTE - ALLUJIB BAR' and a 'CABINE H.T.'. The plan includes various dimensions and labels for different areas and structures.

Key Features and Dimensions:

- PARKINGS:** Located at the top left, with a 'ROUTE PRIVEE' running alongside it.
- ESPACE STOCKAGE:** A green-shaded rectangular area at the top center.
- ESPACE ATHLETES:** A green-shaded rectangular area on the right, labeled '250 m²'.
- W.C. H + F:** A green-shaded rectangular area on the right, labeled 'W.C. H + F'.
- AIRSPACE INDOOR SKYDIVING:** The central large area, labeled 'BAT. PRINCIPAL'.
- TERRASSE:** A rectangular area on the left side of the central space.
- ESPACE DETENTE - ALLUJIB BAR:** A green-shaded rectangular area at the bottom, labeled '300 m²'.
- CABINE H.T.:** A small rectangular area at the bottom center.
- ROUTE PRIVEE:** A path running vertically on the left side.
- FOOD TRUCK:** A green-shaded rectangular area on the left side.
- ACCES PIOTON:** A label indicating an access point.
- ACCES:** A label indicating an access point.
- Dimensions:** Various measurements are noted, such as 10m, 20m, 22m, 25m, 30m, 40m, 50m, 60m, 70m, 80m, 90m, 100m, 110m, 120m, 130m, 140m, 150m, 160m, 170m, 180m, 190m, 200m, 210m, 220m, 230m, 240m, 250m, 260m, 270m, 280m, 290m, 300m, 310m, 320m, 330m, 340m, 350m, 360m, 370m, 380m, 390m, 400m, 410m, 420m, 430m, 440m, 450m, 460m, 470m, 480m, 490m, 500m, 510m, 520m, 530m, 540m, 550m, 560m, 570m, 580m, 590m, 600m, 610m, 620m, 630m, 640m, 650m, 660m, 670m, 680m, 690m, 700m, 710m, 720m, 730m, 740m, 750m, 760m, 770m, 780m, 790m, 800m, 810m, 820m, 830m, 840m, 850m, 860m, 870m, 880m, 890m, 900m, 910m, 920m, 930m, 940m, 950m, 960m, 970m, 980m, 990m, 1000m.

PROVISOIRES: PARKINGS PROVISOIRES

2.14 Wind tunnel

The tunnel itself is an ISG 14ft recirculating wind tunnel constructed in April 2014. The ISG technology makes for arguably the smoothest airflow of any vertical tunnel. The flight chamber glass is 5 meters high and 32 mm thick which creates an optimal outside view of flying for the audience. The thick glass contributes to a relatively quiet environment free of tunnel noise.

The door of the anti-chamber can be opened and closed at any time while the tunnel is running, which enables maximum efficiency in regard to flight time (See Annex F for photos of anti-chamber and door). With the ISG louver technology we are able to regulate the temperature inside the flight chamber. The tunnel is capable to operate at a maximum speed equivalent to 310 km/h.

The tunnel owners and the staff takes great pride in the appearance of the tunnel and after four years of running it is fair to say that the tunnel and facilities looks as good as new.

Staff Maintenance:

- Twice daily operational maintenance checks are completed and recorded by trained tunnel staff.
- Weekly, monthly and yearly maintenance are carried out according to ISG protocol.

Tot number of hours (up to date): 18 000 h

Diameter: 14.7 ft

Hight: 17 m

Hight of the glass: 5 m

Cameras:

All cameras will be set up to output to screens for the judging panels. All cameras are able to record and store the footage for review. All current cameras comply with the technical requirements in the ISC Competition Rules. Airspace Indoor Skydiving is an experienced host of national and international Indoor Skydiving Events and agrees to set up all required cameras with the technical requirements and backups, in the ISC Competition Rules including:

- For IS Formation Skydiving: A top camera view
- For IS Vertical Formation Skydiving: a bottom camera view
- For IS Solo Freestyle: A centre line camera placed directly in front of the tunnel.

For Dynamic Flying:

- Speed Routines: A camera placed at the sideline (option to place at both) and at the centreline. All cameras will output to screens for viewing by the judging panels.
- Free Routines: One centre line camera.

It is understood and agreed that Airspace Indoor Skydiving will have all equipment needed ready and operational for all competition performances and official training. In addition to the minimum requirements Airspace Indoor Skydiving commits to having Judging Cameras and Light Bars set up and ready prior to the competition during the Pre-event Flight Time (10 days prior to competition)

Music / Public Address System

Our facilities are equipped with excellent built-in speakers for music in all areas of the building. The Public Address System and speakers for music will be customised to meet the requirements for the competition.

Any Freestyle or Dynamic Team wishing to perform using music must submit a music file exactly as needed for the performance. All competitors wishing to perform with music should bring their own music headsets and receivers.

Athletes and teams performing to music must choose music tracks that are either free to use or that they can document having the rights to perform to. If not, they risk that the music will not be diffused either in the competition arena or on the live stream.

For Freestyle music duration must not be longer than 10 seconds over the routine's time*.

*Indoor Skydiving Competition Rules for Solo Freestyle 2019 Edition rule 2.8.

Example of free to use music : <https://freetouse.co>

2.15 Pre-event training

Teams that are registered and have paid full Entry Fee can book time at Airspace Indoor Skydiving prior to the event at a discounted rate. All team members have to be present and flying. During the registered training period, flying time will be reserved for teams to train. Flight time could be limited per team to give every team a chance to fly during these dates. The limit will be set when the number of teams is confirmed. The rate of 518,90€ (550 VAT incl.) is for Off Peak hours only (Mon-Sun 09-23). For Peak hours the rate will be 566€ (600 VAT incl.) per hour.

Each team or freestyle performer, whose official registration reaches the Organiser before its deadline, will be given the option of 15min of training time between 8:00 and 24:00 within 48 hours of the official training start. The team must book this time with the Organiser before the official registration deadline. After the deadline the organiser may offer the remaining time to anyone. Junior performers have priority between 08:00 and 18:00.

2.16 Accommodation

2.16.1 Recommended Hotel. Official Hotel Airspace2020



Van Der Valk - Hotel Charleroi Airport

The [Van Der Valk - Hotel Charleroi Airport](#) will be the official Hotel for Airspace 2020. Competition staff will be lodged at this location where we will also hold the closing ceremony and banquet. Equipped with Parking, free Wi-Fi and a Fitness room the Hotel Charleroi Airport is the highest standard hotel in close proximity to Airspace Indoor Skydiving. The hotel is located 7 km from the competition venue. The drive by car takes 10 minutes. A rental car is highly recommended.

2.16.2 Other close-by Hotels

Ibis Budget Charleroi Airport

If you wish to travel on a low budget, [Ibis Budget Charleroi Airport](#) is the option for you. The hotel is located within walking distance to both Airspace Indoor Skydiving and Brussels South Charleroi Airport. It has a modest café, free parking and Wi-Fi and can provide an airport shuttle.



DC Hotel and Restaurant

The [DC Hotel and Restaurant](#) is frequently chosen by our customers because of its close proximity to Airspace and good standards. The access to the on site restaurant, free parking, Wi-Fi and an on demand Airport Shuttle provides you with everything you need for your stay at a reasonable price.

Hotel Aero 44 - Best Western Plus

Also within walking distance to our facility, the [Aero 44](#) is a Best Western Plus Hotel with an on site restaurant. This modern facility offers free Wi-Fi and parking to its numerous customers.



2.18 Outline of media plan

Media Plan

Pre-event

- > Event website www.airspace2022.com
- > Social Media announcement
- > Blog post / mission Statement
- > Partner Outreach

Event Launch

- > Launch e-mail
- > Press Realise
- > Blog and Social Media Announcement
- > Partnerships
- > Event Website www.airspace2022.com
- > event #Airspace2022

Day- to- day

- > Regular Email, Social media, blogging/News updates
- > Thought Leadership and guest posts
- > Payed Promotion

During

- > Social media posts and announcements
- > Live Streaming
- > VIP National press invitations
- > Event website & App

Media Focus

The main focus will be:

- 1) to attract a broader audience for the sport
- 2) attract sponsors
- 3) engage athletes: competitors and non-competitors,
- 4) Attract other media with national and international coverage.

Social media will be used in addition to the website to create momentum and attract a broader audience, partners and sponsors. On these platforms the Live Stream will also be announced and marketed early to encourage people to follow the competition.

Collaboration with tourist departments and both local and international established websites such as www.residentadvisor.net will be established to help market the Event.

Press releases will be written with key search terms in mind, so that anyone with Google Alerts set up for those terms will see the release. VIP Press Invitations will be sent out via E-mail to selected National media channels.

Airspace Indoor Skydiving will also invest in paid advertising during the day-to-day event marketing period leading up to the competition.

Media Channels

As an established and successful business Airspace Indoor Skydiving has developed a solid and proven media strategy. Airspace Indoor Skydiving is working with several external media channels with proven excellent response. These include local newspapers, tourist departments and local TV channels. Airspace continuously work with social media channels like Facebook and Instagram, as well as our own website - all which are frequently updated.

2.19 Accommodation details for FAI/ISC officials.

FAI and ISC officials will be accommodated at Hotel Charleroi Airport - Van Der Valk. The hotel is located 5 km from the tunnel, 9 min by car.

See Annex H for photos

Contact:

Address: Chaussée De Courcelles 115, Gosselies, 6041 Charleroi, Belgium

Website: www.hotelcharleroiairport.be

Phone: +32 71 25 00 50

2.20 Details of all Judging and Scoring Equipment to be provided.

Airspace Indoor Skydiving commits to acquire judging and Scoring equipment that meets at the requirements set forth by the ISC for all events. Airspace has access to an Intime scoring system license through the Belgian Parachute Federation. We also have an agreement with the FFP to provide all necessary hardware for the judging panels.

2.21 Public Address system

Our facility is equipped with a proven and well functioning Public Address System for the whole building.

2.22 Safety

All legal requirements are met for the building in regard to safety and emergency plans. Full ambulance and medical services are available through 112 emergency service.

Hospital:

Several hospitals and health centres are located near by the tunnel.

Nearest Hospital (5 min by car):

Clinique Notre-Dame de Grâce

Chaussée de Nivelles 212

6041 Charleroi

Closest large hospital (15 min by car)

ASBL Grand Hôpital de Charleroi (GHdC)

Grand'Rue, 3

6000 Charleroi

2.23 Proposals for Event Officials

Event Officials to be determined in association with the ISC.

Airspace Indoor Skydiving will cover travel, food and accommodation for FAI Controller, Chief Judges and Assistant to Chief Judge. For all other members of the Judging Panel and Event Officials food and accommodation will be covered by Airspace Indoor Skydiving.

2.24 Details of on-site communications

Airspace Indoor Skydiving is fully equipped with multiple phone lines for both in-house communication and external calls.

2.25 National, State, Provincial, Local, Organiser Legislation / Rules

There are no National, State, Provincial or local legislation or rules that applies to this event.

The organiser, Airspace Indoor Skydiving, requires all competitors to sign a Waiver and Risk Acceptance Statement and to wear a helmet when flying.

2.26 Visa requirements

For information regarding VISA requirements for the Kingdom of Belgium, please visit.

http://diplomatie.belgium.be/en/services/travel_to_belgium/visa_for_belgium/

Should you require a visa invitation, please send your details to worldcup2020@airspace.be

Citizens of the European Union do not need any form of visa or other permission to enter Belgium.

2.27 Medals

Airspace Indoor Skydiving will choose to provide their own award medals conforming to the FAI specifications, in accordance with ISC Medal requirements. A complete set of medals was purchased for the 2020 event and will be reused if given permission by the ISC.

2.28 Anti-Doping Requirements

Airspace Indoor Skydiving agrees to provide appropriate facilities for anti-doping agencies should it be requested.

2.30 Date of post event report

Suggestion for the post event report: Tuesday April 19, 2022 (one week after the end of the competition).

2.31 Additional Information

Opening and Closing Ceremonies

The Opening Ceremony will be held at Airspace Indoor Skydiving on April 6, starting at 18:00. Teams and Members of Delegations from each country will be required to take part in a short parade as all the countries and teams are being announced. The ceremony will be held outdoors. Please dress accordingly.

FLAGS AND NATIONAL ANTHEMS

- All delegations are required to bring their official country flag to the competition.
- All delegations are required to send their official country national anthem to worldcup2022@airspace.be in electronic format before April 4.

The Closing Ceremony will be held at the Van der Valk - Hotel Charleroi Airport on April 9, starting at 20:00. The ceremony will begin with the Gala Dinner followed by the awards and prize giving ceremony.

The Gala Dinner hall has a max capacity of 500 people. With 400 expected athletes and 60 staff we have a very limited amount of tickets available. If you want to be sure to attend you need to register as a non-competitor (*anyone that is part of the Official delegation e.g Heads of delegation, Team Leaders, Coaches, Judges in training and accompanying persons*). If after this we still have slots available these will be sold at the Airspace Indoor Skydiving Reception during the competition.

If you wish to only participate at the awards and prize giving ceremony you will be able to do so. As soon as the Gala Dinner is finished we will be able to liberate more space for those that wish to attend.

Coronavirus (Covid-19) - Information about the situation in Belgium

The Airspace2020 Organising Committee will be following advise from The Belgian Federal Public Health Service, which has created a dedicated webpage to inform the public about the situation locally and abroad. We would advise all athletes, staff and spectators to do the same.

<https://www.info-coronavirus.be/en/>

To learn more about the coronavirus (Covid-19) please visit the WHO website:

<https://www.who.int/emergencies/diseases/novel-coronavirus-2019>

Airspace Indoor Skydiving will follow all necessary protocols given by the Belgian Government to carry out the event.

Postponement / Cancellation

Should the ongoing pandemic hinder the event from taking place all information in this document will have to be modified.

Contact

For any questions, please do not hesitate to send us an e-mail to worldcup2022@airspace.be or check out our website www.airspace2022.com. Here you can also subscribe to the Airspace2022 newsletter.

We are looking forward to seeing you all at Airspace2022 the 2nd FAI European Indoor Skydiving Championships and 4th FAI World Cup of Indoor Skydiving 2022.

AIRSPACE NV
Compte Business Compact KBC
BE78 7340 3585 8986 EU



02-11-2017 **FAI-IPC**
Numéro de compte
CH25 0483 5045 7968 3201 1
BIC: CRESCHZZ80A
Communication
1600 3RD FAI WISC 2019 + 4TH WORLD CUP OF INDOOR SKYD
IVING 2020 AND 2ND EUROPEAN
Par
les services internet
Virement

-3 200,00 EUR

ANNEX A

Proof of Payment

3rd FAI World Indoor Skydiving Championships 2019 and
4th World Cup of indoor Skydiving 2020, & 2nd European Indoor

November 13, 2017

FAI Parachuting Commission
Maison du Sport International
Av. de Rhodanie 54
CH-1007 Lausanne, Switzerland
Tél : +41(0)21 345 10 70 / Fax : +41 (0) 21 345 10 77
Web : www.fai.org / Email : scc@fai.org

Subject : Support to Airspace s.a. to be the host of 2020 4th World Cup
of Indoor Skydiving in Charleroi

The following letter is written with the intent to show our support to Airspace s.a.
Charleroi in their process to host the 2020 4th World Cup of Indoor Skydiving in
Charleroi.

Hosted by Airspace s.a. Charleroi, this Championship will be a great opportunity to
create exposure in Charleroi, in our province and our country about this new sanctioned
sport that is bodyflight. Too few people know that thousands of people around the
world have adopted this as a sport and can train to compete in National and
International events. This will be a unique way, along with a solid marketing plan, to
show the Belgium population that this new sport is accessible to all, in Charleroi.

The Hainaut Chamber of Commerce and Industry (belgian Chambers are private law
organisations) connects businesses of all sizes, from all sectors since 1827 (Charleroi
section).

More than 1000 member companies have decided to be located in our area and to
participate in the economic environment.

CHARLEROI
(siège social)
Av. Général Michel, 1C
B-6000 Charleroi
Tél. +32(0)71 32 11 60
Fax +32(0)71 33 42 18

MONS-BORINAGE
Parc Initialis
Bd André Delvaux, 3
B-7000 Mons
Tél. +32(0)65 22 65 08
Fax +32(0)65 35 13 11

E-mail: info@ccih.be
TVA BE 0401 571 684
Banque: BE 66 3601 6300 3943

www.ccih.be

We are the local association representing them and recognizing their actions and
successes. This is why we are very proud to support Airspace s.a. and we ask you to
consider them to host the World Cup of Indoor Skydiving 2020

Sincerely,



Benoit MOONS
Directeur



BRUSSELS
SOUTH
CHARLEROI
AIRPORT S.A.

Charleroi,

FAI Parachuting Commission
Maison du sport international
Avenue de Rhodanie 54
1007 Lausanne
SWITZERLAND

N/Réf : JJC/sas/eke/2017/01

**SUBJECT : support to AIRSPACE INDOOR SKYDIVING to be the host of 2020 World Cup
Indoor Skydiving in Charleroi**

Dear Sir,

The following letter is written to show our support to AIRSPACE INDOOR SKYDIVING in their application to be the host for the World Cup 2020.

This Championship will be a great opportunity to create exposure about bodyflight in Charleroi, in our country, but also in Europe. Too few people know that this sport is accessible to all.

AIRSPACE INDOOR SKYDIVING is the most powerful, highest and most advanced free-fall simulator in Europe and is located in close proximity of our airport which thanks to its 185 destinations is a central point in Europe.

This is why we are very proud to support AIRSPACE INDOOR SKYDIVING and we ask you to consider them to host the World Cup 2020.

Faithfully yours,


Jean-Jacques CLOQUET,
CEO,

BRUSSELS SOUTH CHARLEROI AIRPORT s.a.
RUE DES FRERES WRIGHT 8 • B-6041 CHARLEROI • www.charleroi-airport.com
Tél : +32(0)71 25 12 11 • Fax : +32(0)71 25 12 02 • E-mail : bsca@charleroi-airport.com
TVA BE 0444.556.344 • RPM CHARLEROI • ING 3600000001-07 • FORTIS 2600140140-44

ANNEX B3

Charleroi, the 22 Th of November 2017



CHARLEROI
PHILIPPE
VAN CAUWENBERGHE
4^e ÉCHEVIN

FAI Parachuting Commission

Maison du sport international
Avenue de Rhodanie 54
1007 Lausanne
Switzerland

Subject : Reference letter to Airspace indoor Skydiving to be the host of 2020 World Cup of Indoor Skydiving in Charleroi

Dear sir or Madam ,

The deputy mayor in charge of Sport would like to support the Airspace indoor Skydiving in their application to be the host for the World Cup of Indoor Skydiving 2020.

The World Cup of Indoor Skydiving 2020 will be a great opportunity to welcome people from all around the world and to develop Tourism.

Airspace Indoor Skydiving is an important, professional, innovative free-fall simulator in Europe and its location is closed to the Charleroi Airport (Brussels South Charleroi Airport).

We believe on the capacity of Airspace to organise the World Cup and we are really enthusiastic to support them on their application.

Your faithfully,

Philippe Van Cauwenberghe

Philippe VAN CAUWENBERGHE
Échevin des Sports,
des Affaires Economiques,
du Commerce et des Marchés.

Agent traitant : Snauxwaert Séverine - 071/862311 - Secrétaire de Cabinet : Hugues RATY - 071/862217
Adresse E-MAIL: severine.snauxwaert@charleroi.be
rue de Montignies, 101 - Centre Hélias - 4^{ème} étage - 6000 Charleroi

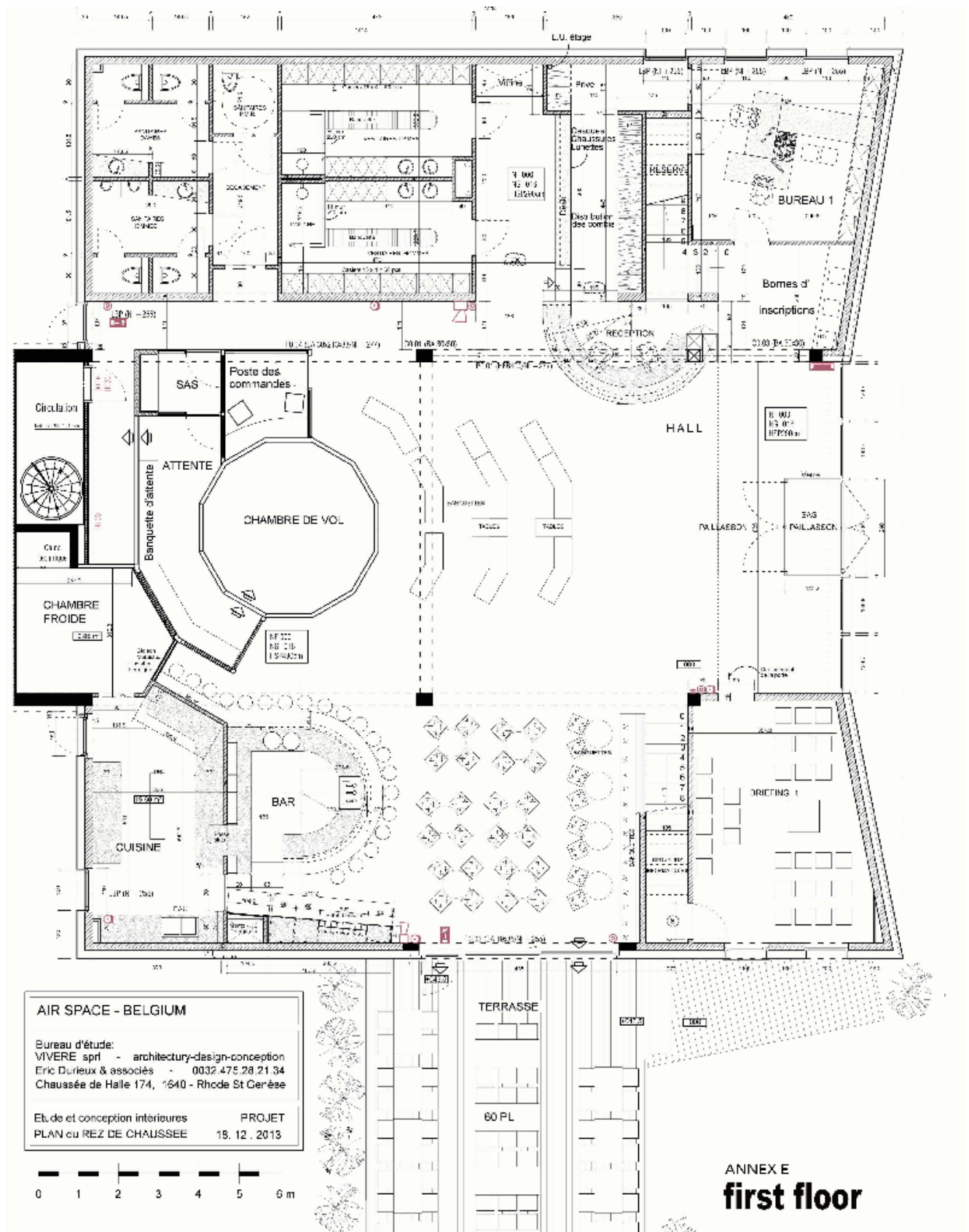
ANNEX D

Map: venue in relation to major European Cities

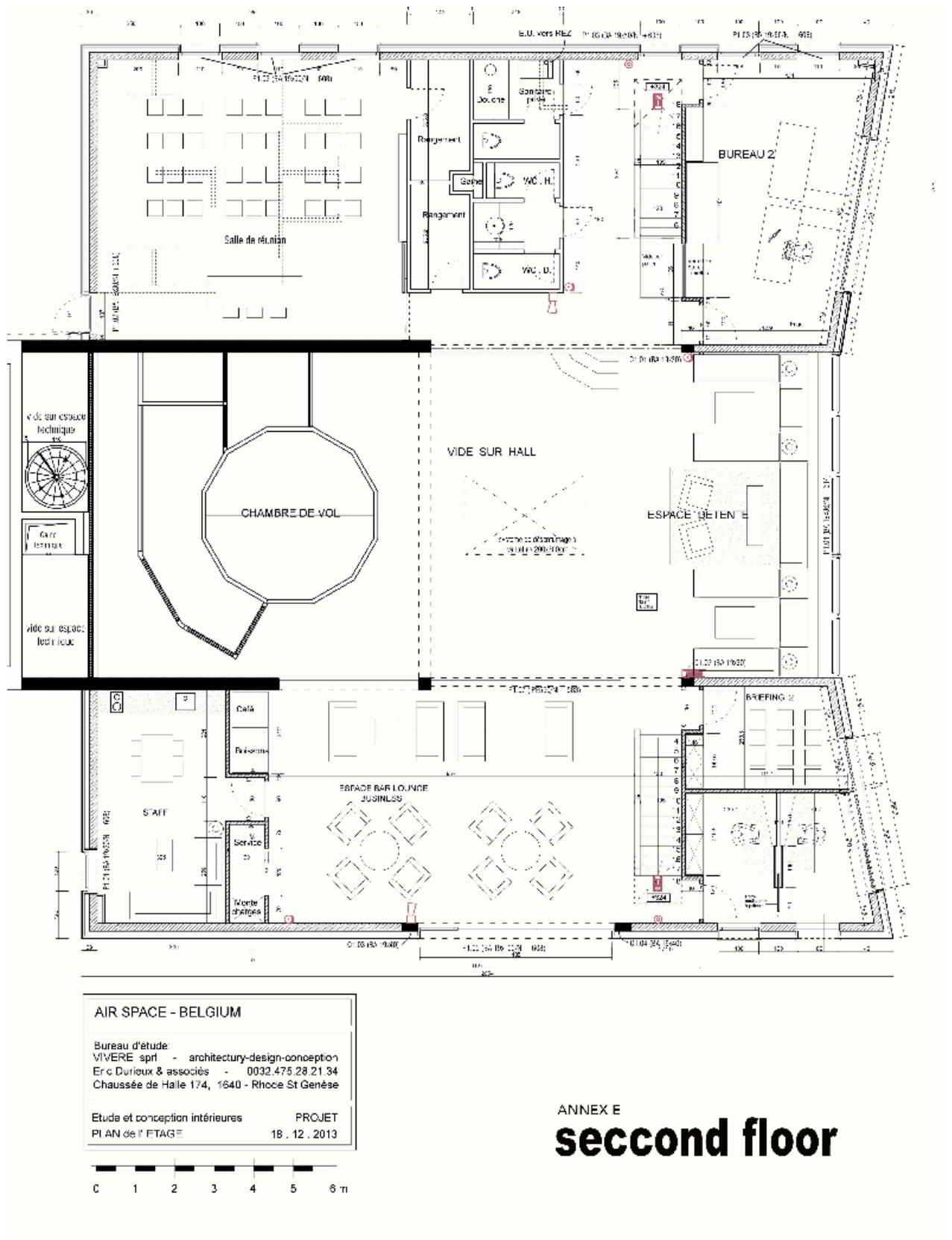


Map: venue in relation to large Belgian Cities





/Volumes/USB ERIC/AUTO CAD - general/AIR SPACE - S



/Volumes/USB ERIC/AUTO CAD - general/AIR SPACE - S

ANNEX F

Photos of anti-chamber and door



Anti-chamber to the right , to the left is the door between flight chamber and anti-chamber.
Photo taken from the entrance to the anti-chamber.



Door between flight chamber and anti-chamber.
Photo taken from the inside of the flight chamber.

The door of the anti-chamber can be opened and closed at any time while the tunnel is running, which enables maximum efficiency in regard to flight time.

ANNEX G

Ibis Budget



Hotel Baladins



Best Western Area 44



Hotel Charleroi Airport

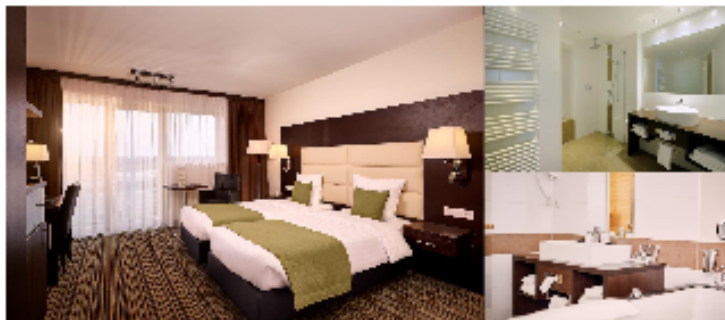


ANNEX H
Accommodation details for FAI/IPC officials: Hotel Charleroi Airport

Outside



Rooms



Breakfast



Dining/Bar



Gym

